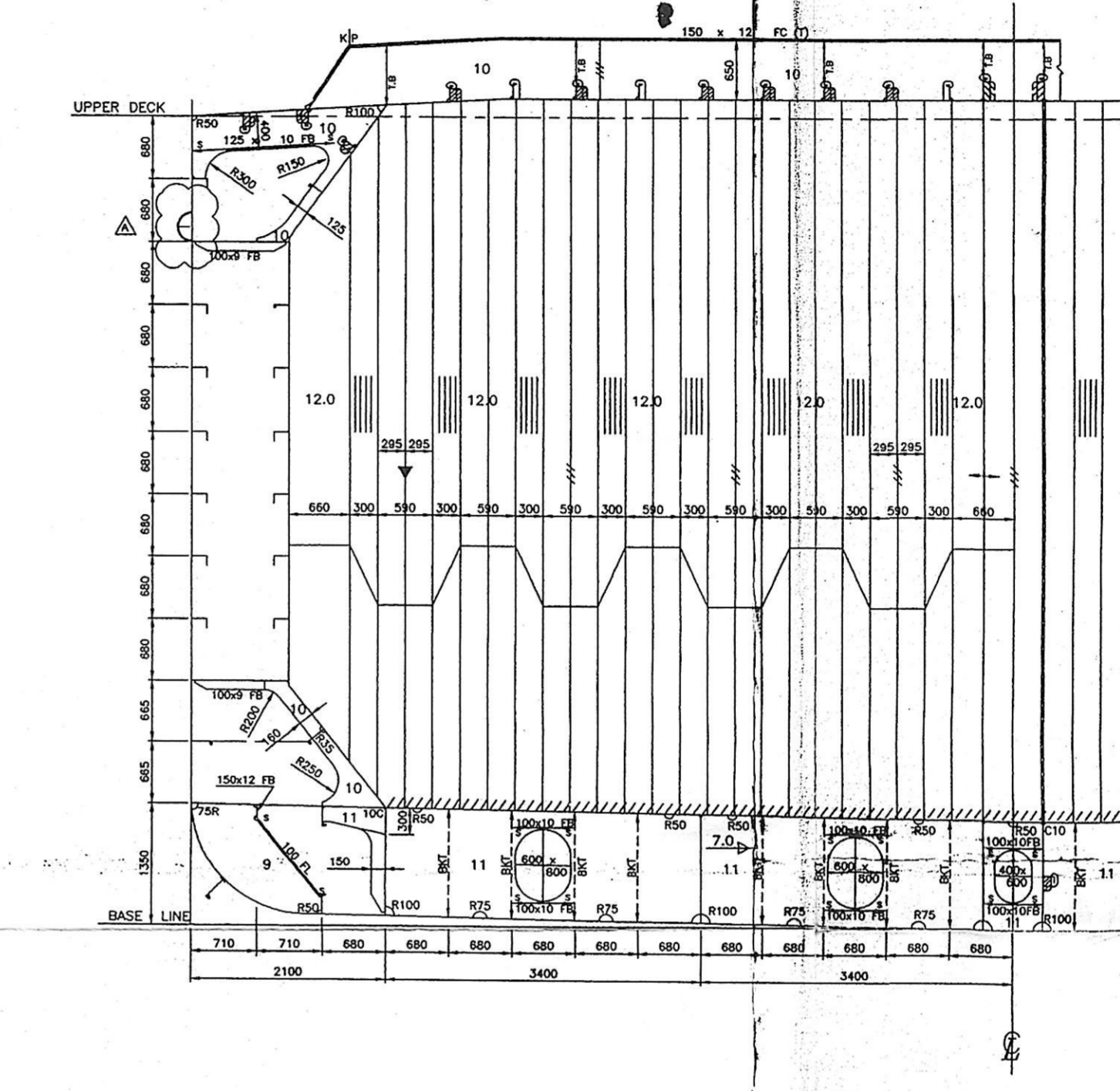
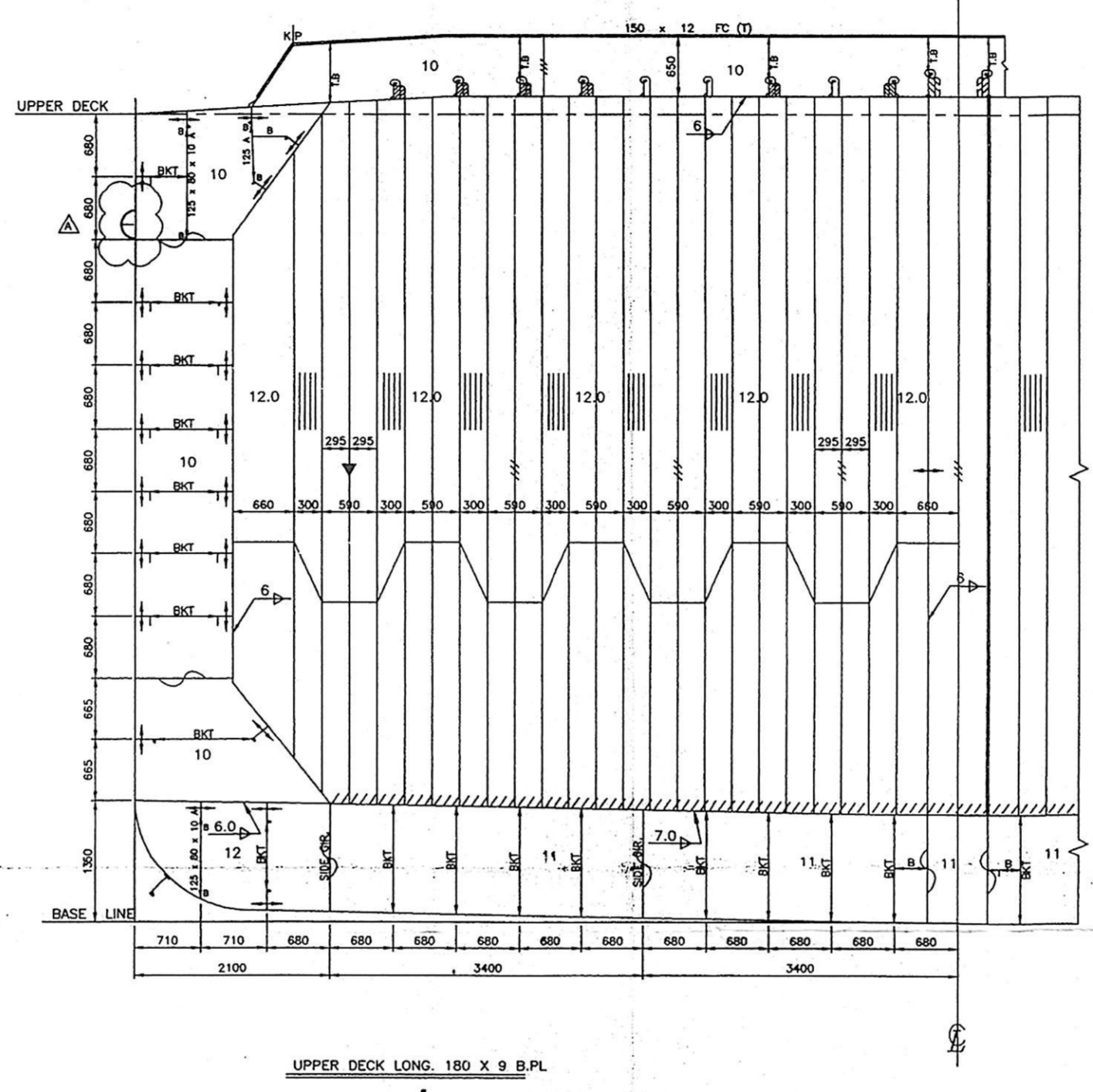
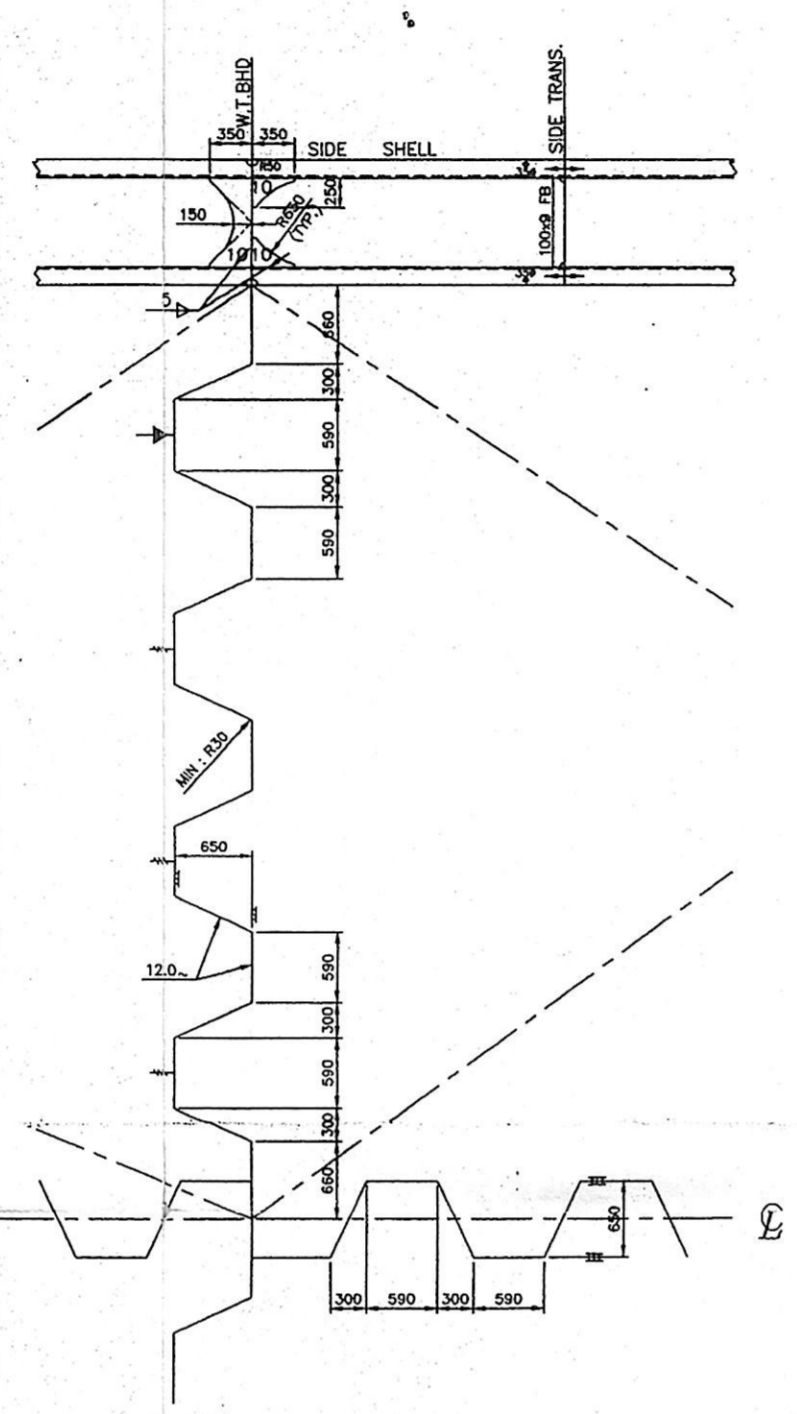
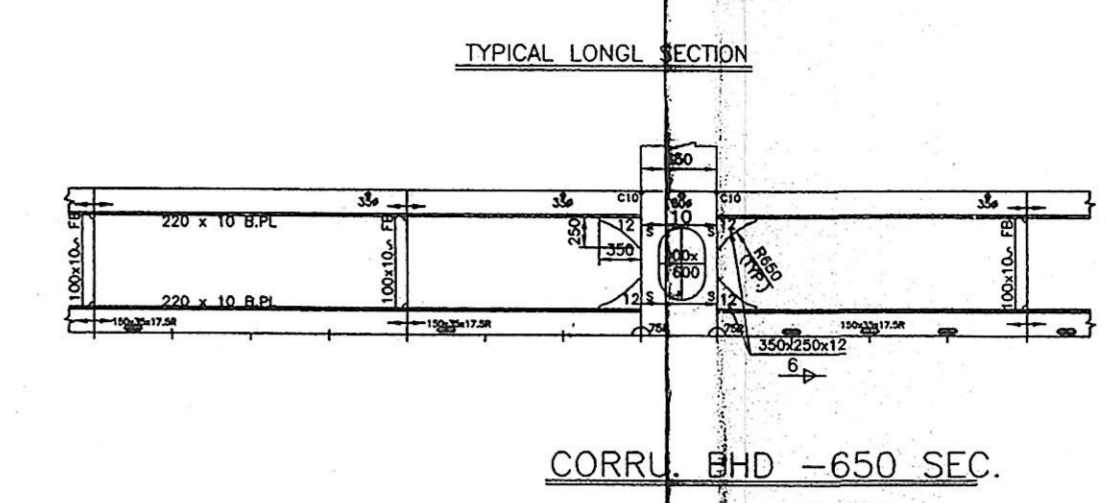
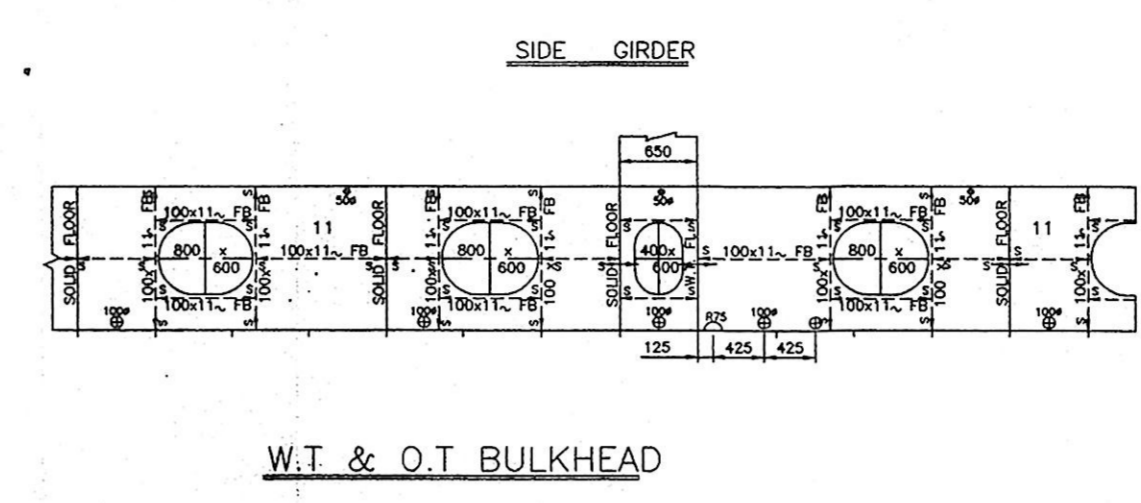
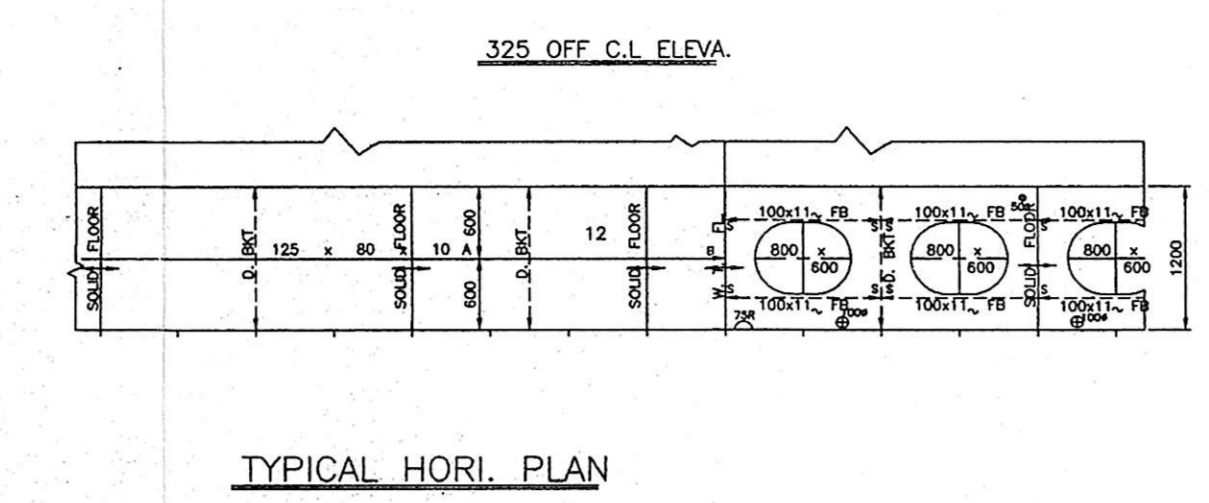
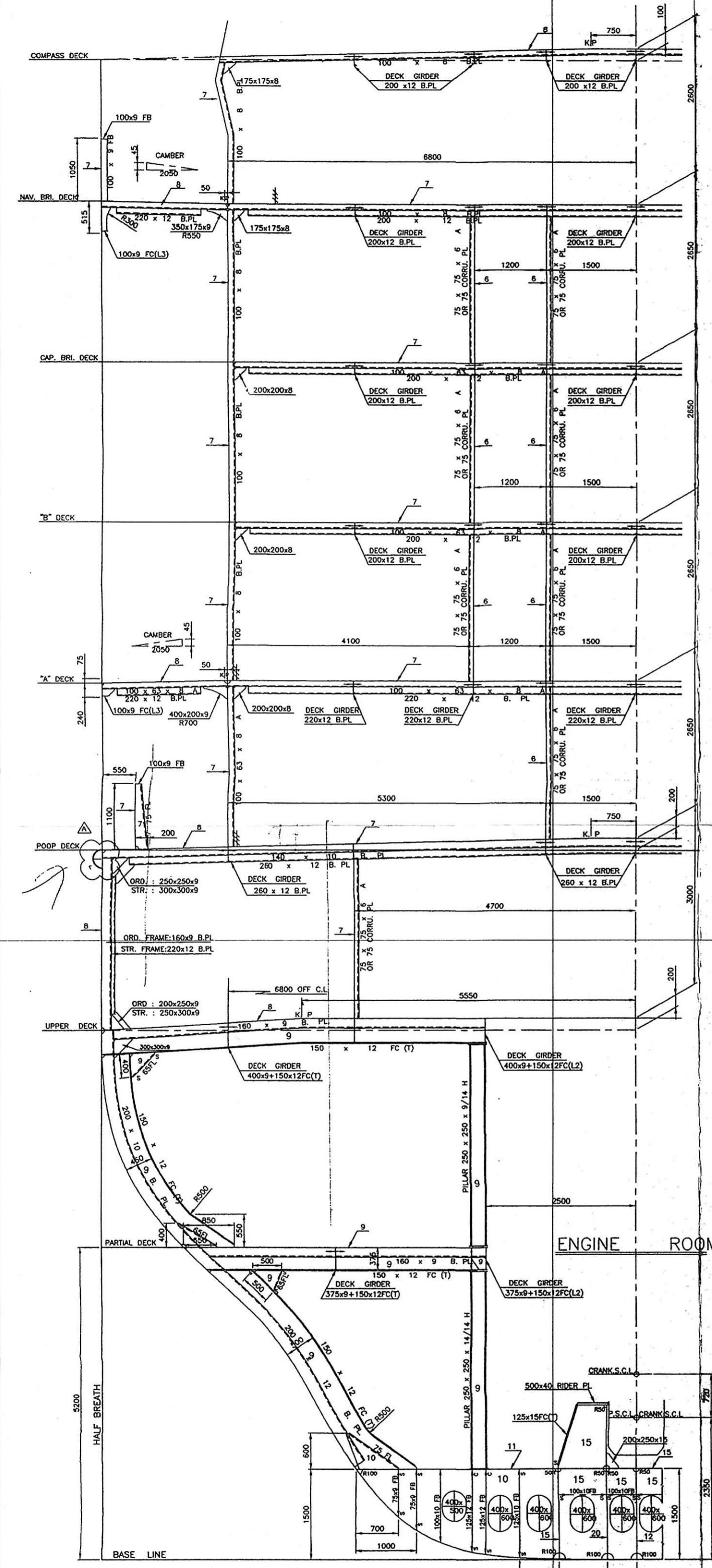


| BIBLIOGRAPHY | | |
|--------------|-----|------------------------------|
| DATE | REV | DESCRIPTION |
| 2006.10.23 | 1 | DESIGNED BY HULL DESIGN TEAM |
| 2007.03.06 | 1 | MODIFIED BY OWNER COMMENTS |

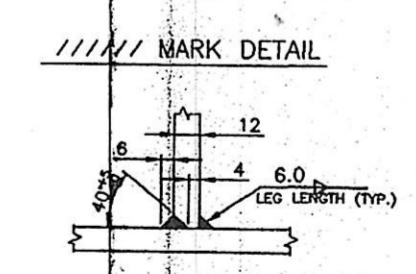
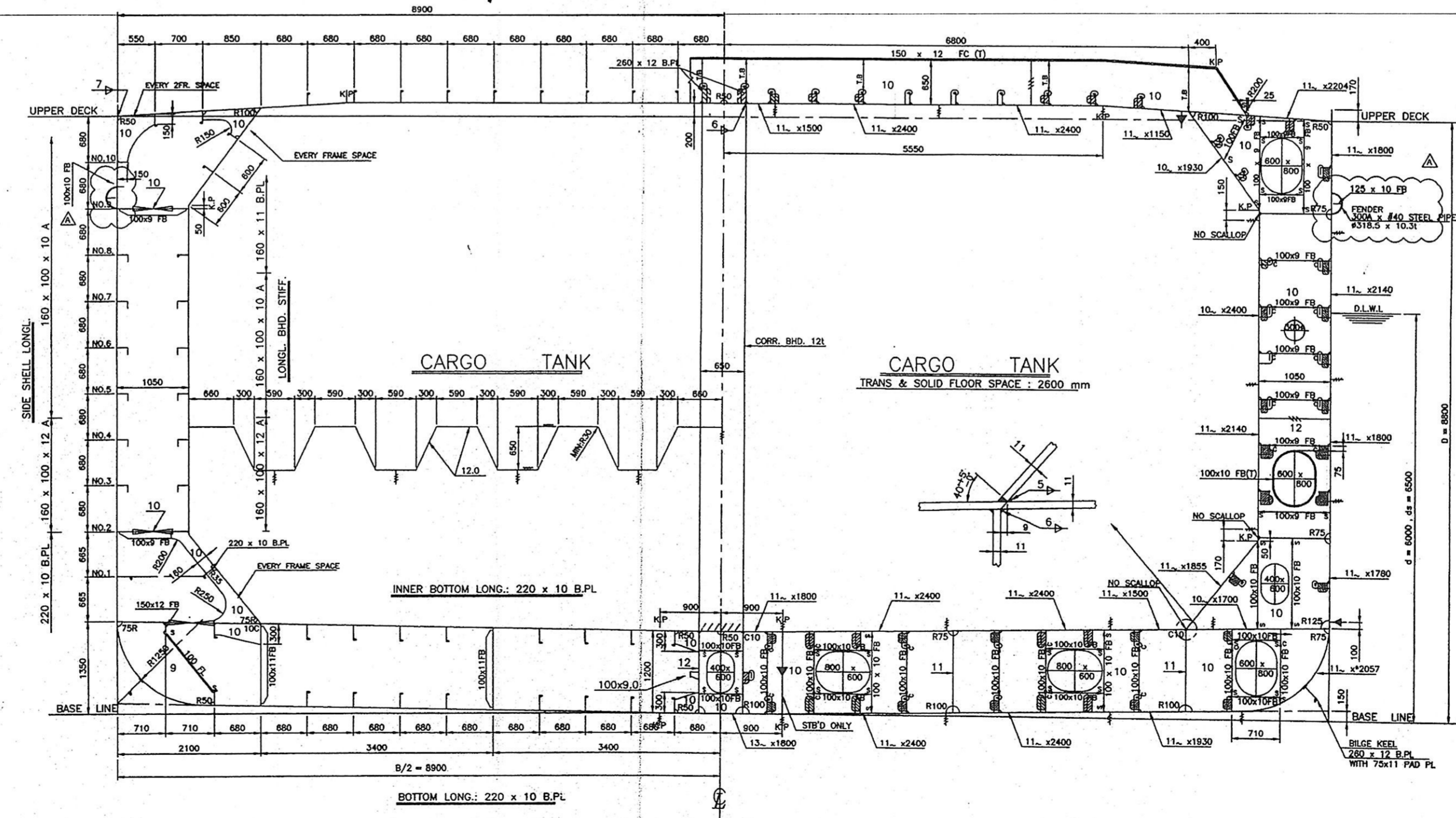
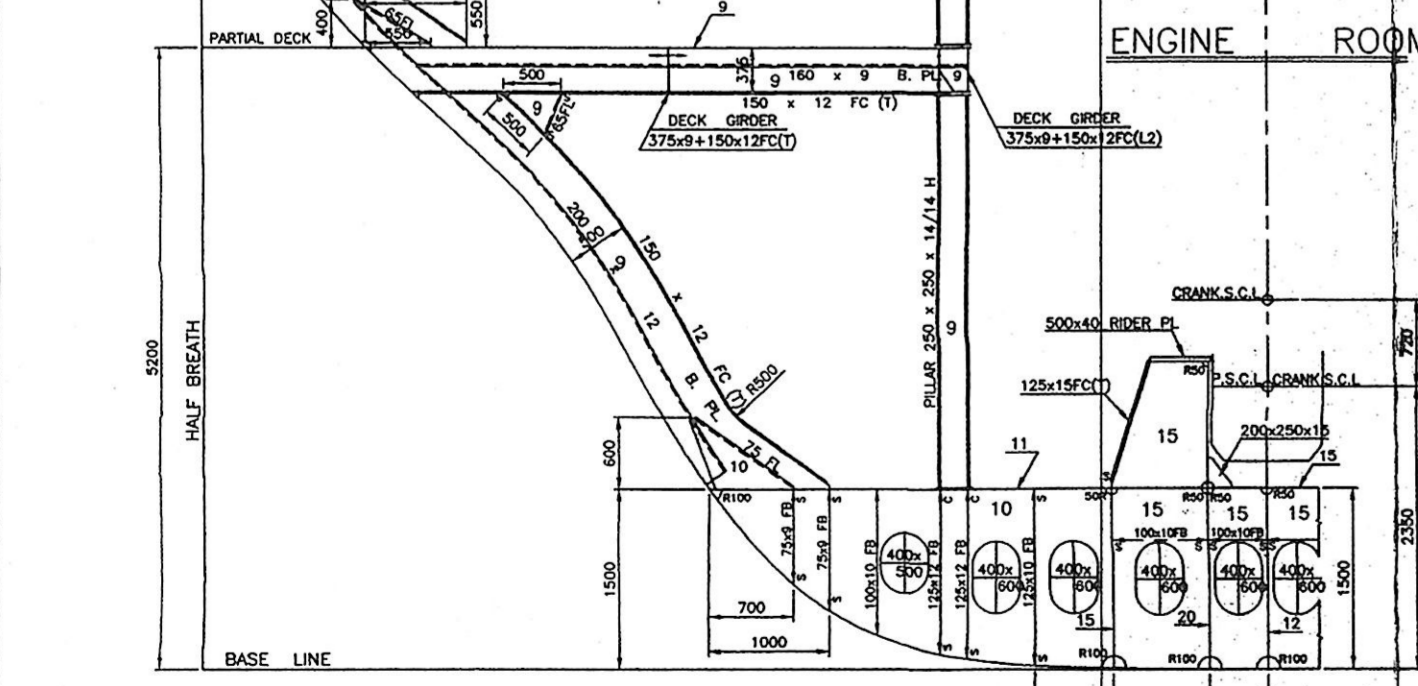


EQUIPMENT NUMBER

EN = $\Delta^2 + 2.0BH + 0.1A$
 = 424 + 659 + 50
 = 1133
 $\Delta^2 = 8745.97 = 424.46 = 424$
 $2.0BH = 2.0 \times 17.80 \times 18.50 = 658.6 = 659$
 $A = 2.30 + 3.00 + 2.65 \times 4 + 2.6 = 18.50$
 $0.1A = 0.1 \times (18.50 + 2.6) = 2.11$
 $EN = 0.1 \times (2.30 + 3.00 + 2.65 \times 4 + 2.6) = 49.53 = 50$
 EN = 276.53

EQUIPMENTS (1060~1140)

BOWER ANCHOR (STOCKLESS) 3300 kg x 2EA
 BOWER ANCHOR CHAIN (STD. GRADE III) 459 x 150m
 TOW LINE TP P ROPE GRADE III 528 x 200m
 MOORING ROPE (NYLON FIBER ROPE) 328x180m x 4EA



PRINCIPAL PARTICULARS

| | | |
|-------------------|---|--------------|
| LENGTH | O.A. | Abt. 102.70m |
| LENGTH | B.P. | 93.00m |
| LENGTH | (SCANTLING) | 95.00m |
| BREADTH | (M.O.) | 17.80m |
| DEPTH | (M.O.) | 8.90m |
| DRAFT | (D.L.W.) | 6.00m |
| DRAFT | (SCANTLING) | 6.50m |
| SPEED | (FULL LOAD, 85% M.C.R., 10% S.M) Abt. | 11.70 KNOTS |
| BLOCK COEFFICIENT | (Cb) | 0.774 |
| CLASSIFICATION | B.V. +HULL, +MACH. OIL TANKER, ESP. +AUT.-UMS. MON-SHAFT, UNRESTRICTED NAVIGATION | |

MATERIAL

NO MARKED B.V. GRADE : B.V/A STEEL

OWNER : COURTNEY FYNN SHIPPING LIMITED PROJECT NO. FS-1003-7

APP. BY SUBJECT : 5500 DWT OIL PRODUCT TANKER FOR BUNKERING SERVICE

APP. BY Y.S.PARK

CHK. BY

MIDSHIP SECTION

OWN. BY J.W.SONG SCALE 1/40 DATE 2006.10.23 CLASS B.V. DWG. NO. B-201 REV. 1

BUILDER ZHEJIANG FANSHUN SHIPBUILDING CO., LTD.

DESIGNER FAR EAST SHIP DESIGN & ENGINEERING CO., LTD.
 1F, 1111, BONGHWA-DONG, BONGHWA-VALLEY, 127-7, GWAJONG-GU, SEONGNAM-SI, GYANGGI-DO, KOREA

TEL : (82-51-328-8000), FAX : (82-51-328-3111), E-mail address : fesaes@fshd.co.kr

END